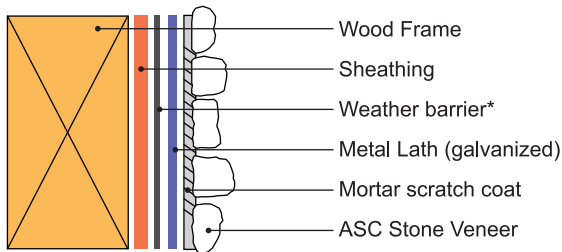
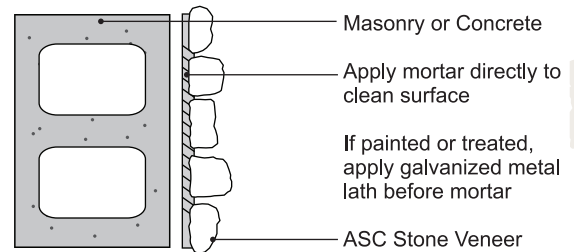


Architectural Stone Concepts Installation Guide



*Always check local building codes



Masonry Sealer is not necessary but may be applied to surface in area's prone to splashing water, dirt, soot or smoke

1) Surface Preparation

Attach weather resistive barrier to the sheathing surface.

Apply metal lath over the weather resistive barrier.

Apply one half inch scratch coat of type N or S mortar cement over the metal lath.

2) Stone Installation

First Install the corner pieces, then the flat pieces.

Dampen with a brush or light spray the back of each stone piece and the scratch coat.

Apply 1/2" to 3/4" thick mortar to prepared surface or alternately back of stone.

Place stone into place on surface.

3) Grout Application

Use grout bag to fill in joints. (There should be no visible lath after grouting)

When joints become firm, or "thumb-print" dry, press mortar into joints.

When mortar dries, whisk or brush away loose mortar.